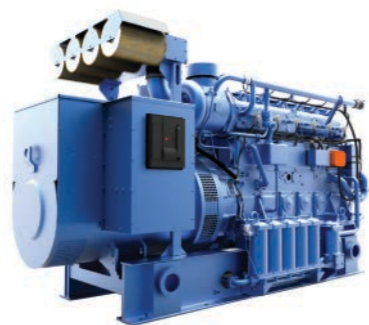


**120 YEARS**  
OF SUCCESSFUL WORK

**DIESEL AND GAS ENGINE-GENERATOR SETS**

Diesel and Gas gensets can be used as the main or backup power supply (three-phase alternating current voltage of 0.4 kV, 6.3 kV and 10.5 kV) for various facilities. The generator set is an inline 6 or 8-cylinder engine and generator mounted on a single frame. The gas genset is equipped with a gas-piston engine with internal carburation and spark precombustion chamber ignition.



Due to the high durability resource and assemblage quality our Customer receives the product that will serve him for many years.

**APPLICATIONS**

- ✓ Shipbuilding
- ✓ Railway transport
- ✓ Electricity-producing industry
- ✓ Mineral resource industry
- ✓ Hydrocarbon production



Model	DG80	DG1000	GDG90	GDG800
Nominal rated power, kW	520	1000	500	800
Rated speed, rpm	1000			
Fuel Type	diesel		fuel gas	
Overall dimensions, mm	4133x1485 x2105	4950x1552 x2400	4120x1438 x2105	4800x1780 x2500
Weight (dry), kg	9660	13220	9452	12300

**CONTAINERISED DIESEL AND GAS POWER STATIONS**

Development and production of containerised power stations is one of the company's specializations. If the Customer has no room for installation, we offer power sets in the block container of our own production. Also, it is possible to install a heat reclamation system, which allows additional use of thermal energy for various purposes. In this case, the efficiency factor increases to 95%. Such power stations are easy to maintain, install and transport.



Power sets in the block container are equipped with all necessary internal systems: heating, ventilation, lighting, gas exhaust, fire fighting.

**APPLICATIONS**

- ✓ Oil and gas facilities
- ✓ Remote residential and industrial facilities
- ✓ Military facility
- ✓ Objects located in the Far North and difficult climatic conditions



Model	DE600	DE1000	GE20	GE50
Nominal rated power, kW	600	1000	600	1000
Rated speed, rpm	1000			
Fuel Type	diesel		fuel gas	
Overall dimensions, mm	10000x3000 x3100	11000x3000 x3100	9000x3000 x3100	10000x3000 x3100
Weight (dry), kg	21000	28000	20000	27000

**DIESEL AND GAS ENGINES**

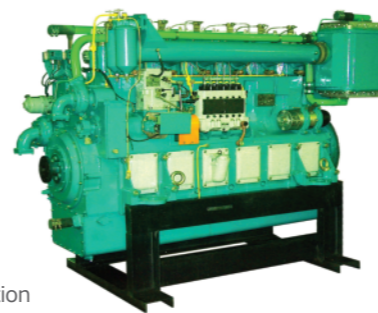
The basic model of our engines is diesel 64H21/21. It is an inline four-stroke high-power water-cooled engine, with direct fuel injection, turbocharged and aftercooled. On its base we've created diesel 84H21/26 and gas 6ГЧН21/21 and 8ГЧН21/26 engines.



The engines are simple and easy to maintain, have high maintainability, that extends their service life up to 240 000 moto hours.

**APPLICATIONS**

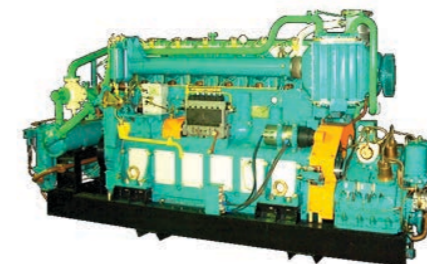
- ✓ Shipbuilding
- ✓ Railway transport
- ✓ Electricity-producing industry
- ✓ Mineral resource industry
- ✓ Hydrocarbon production



Model	280D	400D	293GD-1	492GD-1
Nominal rated power, kW	543	1070	636	1060
Rated speed, rpm	1000			
Fuel Type	diesel		fuel gas	
Overall dimensions, mm	2475x925 x1720	3300x1216 x2030	2810x1046 x1948	3374x1315 x2266
Weight (dry), kg	5300	7800	4850	7800

**MARINE SETS (300kW - 1200kW)**

We offer our Customers the main marine engines, marine generators, propulsion systems, diesel reverse gear sets of river and sea performance on the basis of our own production sets. They are designed for installation on newly built ships, as well as on the modernized ships in which the main engines (installations, engine-generators) have exhausted their performance potential. All the products are certified by The Russian Maritime Register of Shipping or the Russian River Register.



- SERVICES**
- .....
  - Adaptation of sets to the ship according to the customer's TOR
  - Installation and commissioning works
  - Service maintenance

**APPLICATIONS**

- ✓ Naval fleet
- ✓ Dry-cargo fleet
- ✓ Oil-tanker fleet
- ✓ Towing fleet
- ✓ Aided fleet
- ✓ Fishing fleet
- ✓ Passenger fleet



**GEARS AND COGWHEELS**

The production of gears and cogwheels is one of the company's specializations. We will produce for you any kind of cogwheels involved in the transfer of mechanical energy. In addition, the company provides repair and restoration of broken items and modernizes them according to Customer's requirement.

**APPLICATIONS**

- ✓ Heavy-duty dump trucks
- ✓ Excavators
- ✓ Railway transport
- ✓ Drilling rig systems

**TEM19-001 - FIRST IN RUSSIA HEAT, WORKING ON LIQUEFIED NATURAL GAS**

Designers of our enterprise in 2013 developed innovative, the first in Russia gas-piston power set of the shunting locomotive with power of 880 kW. As part of the locomotive, the engine has passed all required tests and is successfully operated on the railway.



**WE ARE ALWAYS OPEN TO PARTNERSHIP AND COOPERATION**

Volga Diesel n.a. Mamin - one of the largest domestic enterprises specializing in the production of reliable diesel and gas-piston sets, which have a wide range of applications in the industry.

In our work we rely on our accumulated experience of many years, supported by a high level of technical equipment and modern production technologies.

The products which are manufactured in our factory save your company considerable money.

**88600 sqm**  
production complex

**900 units**  
of high-tech metalworking equipment

**20 countries**  
of the world in which our equipment works

**CONTACTS**

[www.vdm-plant.ru](http://www.vdm-plant.ru)

**PRODUCTION**

413850, Russia  
Saratov region, Balakovo  
Kommunisticheskaya str., 124

+7 (800) 550-37-73  
+7 (8453) 35-84-97  
info@vdm-plant.ru

**MOSCOW OFFICE**

123610, Moscow  
Krasnopresnenskaya emb., 12  
entrance 3, office 1809

+7 (495) 258-24-79  
+7 (495) 258-24-70  
mos@vdm-plant.ru

**ADDITIONAL MOSCOW OFFICE**

119607, Moscow  
Michurinsky pr., 29

+7 (495) 965-55-42  
fax@vdm-plant.ru  
mos-m@vdm-plant.ru